

MICROZONAZIONE SISMICA

Carta di microzonazione sismica





H_{sm} 1/2
scala 1:5.000

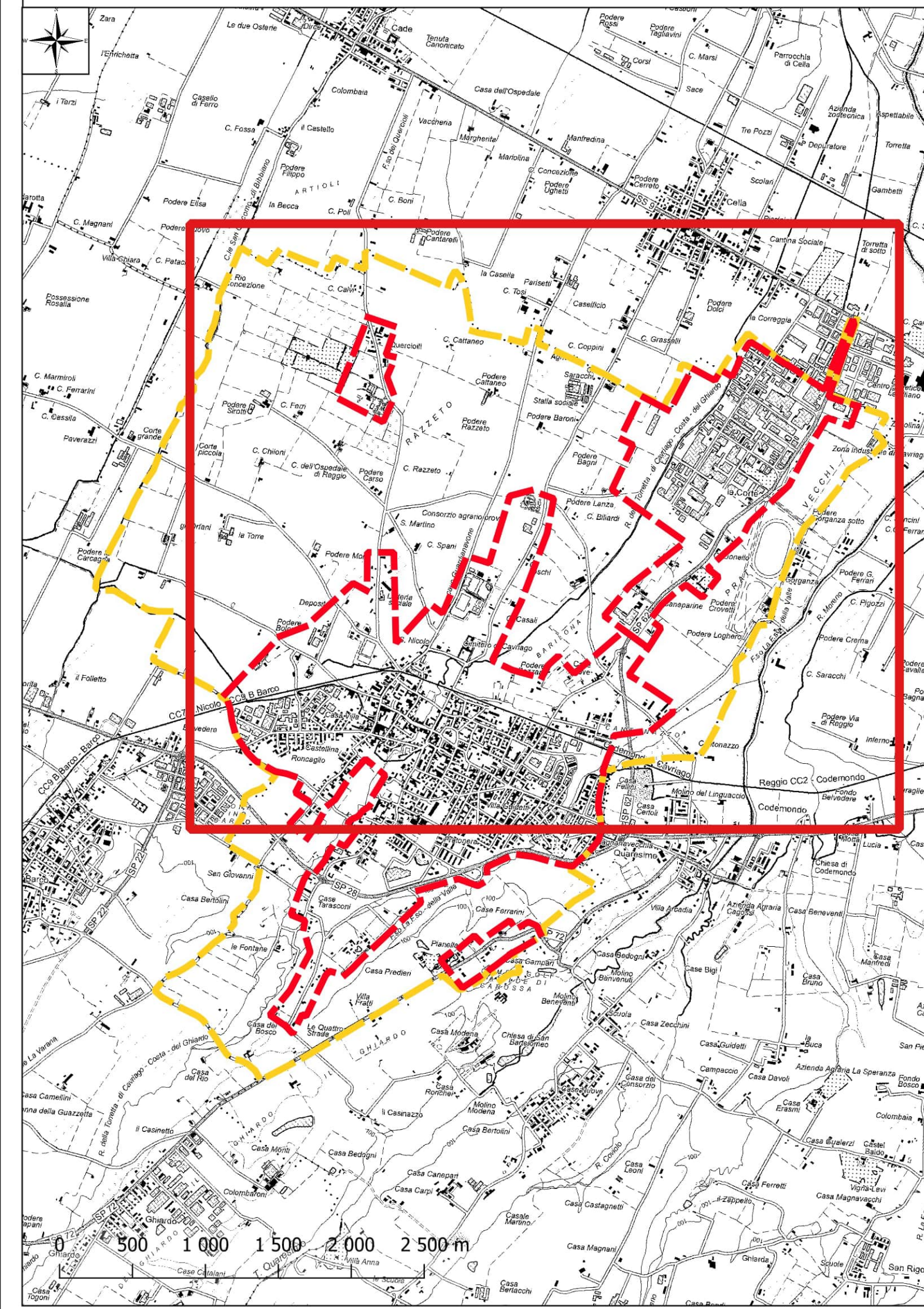
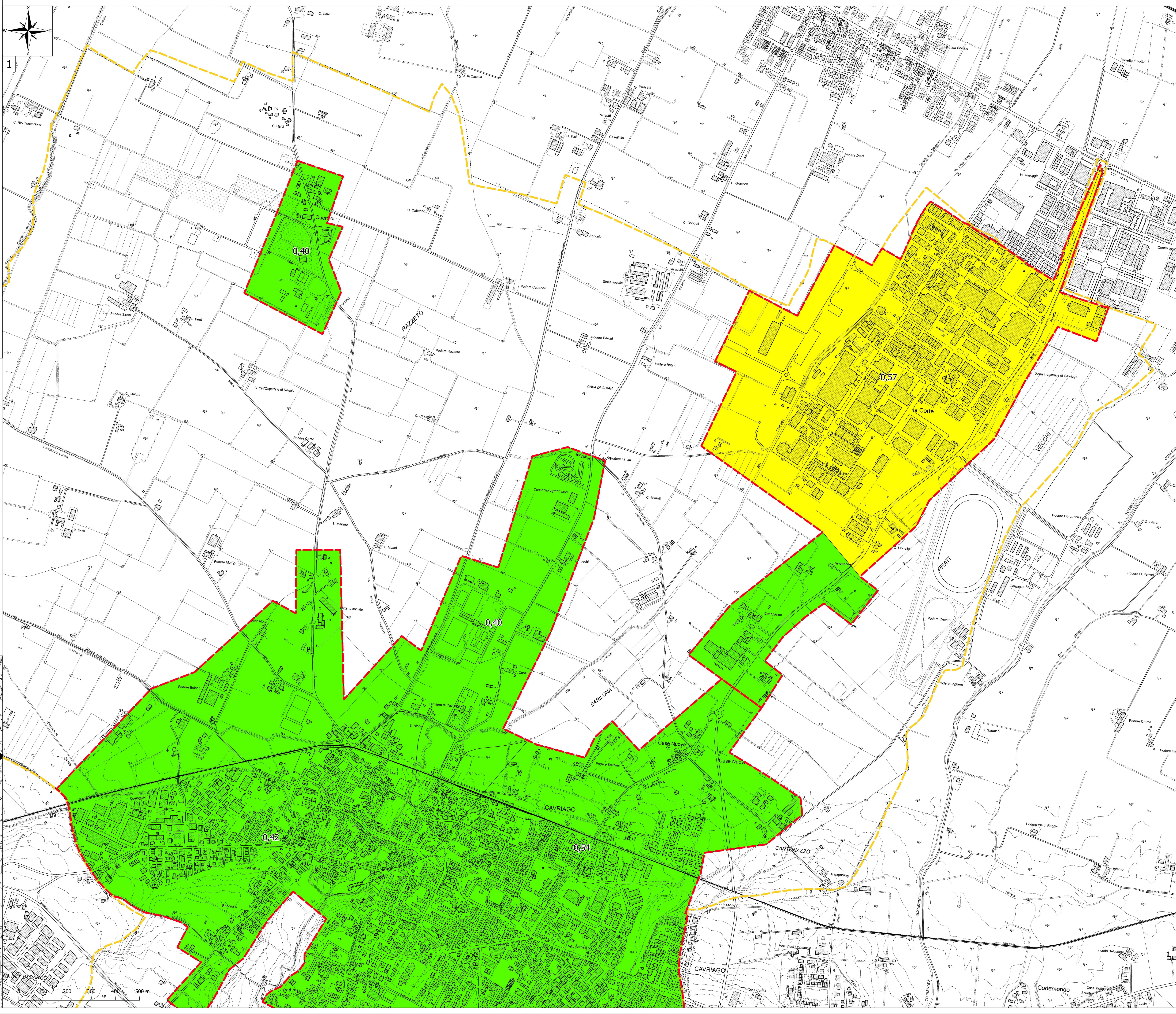
Regione Emilia-Romagna
Comune di Cavriago



Regione	Soggetto realizzatore	Data
Emilia-Romagna	 Direttori tecnici: Dr. Geol. Carlo Caleffi Dr. Geol. Francesco Cerutti Dr. Geol. Matteo Baisi Dr. ssa Olga Brontesi Dr. Geol. Alessandro Ferrari Dr. ssa Geol. Melinda Raimondo	Aprile 2025

MS3

- Legenda**
-  Confine comunale
 -  Aree oggetto di Microzonazione Sismica
 - Zone stabili suscettibili di amplificazioni locali**
 -  H_{sm} = 0,39 - 0,54 g
 -  H_{sm} = 0,55 - 0,70 g




MICROZONAZIONE SISMICA


Carta di microzonazione sismica

H_{SM} 2/2
scala 1:5.000

Regione Emilia-Romagna
Comune di Cavriago



Regione
Emilia-Romagna


Soggetto realizzatore

Direttori tecnici:
Dr. Geol. Carlo Caleffi
Dr. Geol. Francesco Cerutti


Data
Aprile 2025

MS3


Dr. Geol. Matteo Baisi
Dr. ssa Olga Brontesi
Dr. Geol. Alessandro Ferrari
Dr. ssa Geol. Melinda Raimondo


Legenda

 Confine comunale

 Aree oggetto di Microzonazione Sismica

Zone stabili suscettibili di amplificazioni locali

 H_{SM} = 0,39 - 0,54 g

 H_{SM} = 0,55 - 0,70 g

